

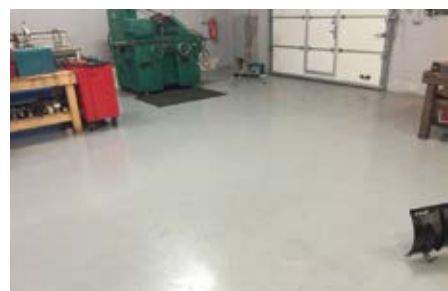
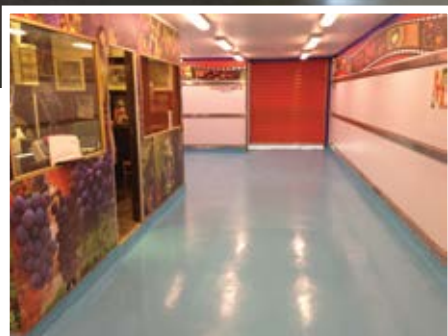


Neodur® Fast Track

Fast-curing aliphatic polyurea coatings
for flooring and waterproofing applications



24 hours



Neodur® Fast Track



Two-component fast-curing high-solid, solvent-based aliphatic polyurea coating for exterior & interior flooring applications

Fields of application

On floors which require very high mechanical and chemical resistance, e.g.:

- ▶ Outdoor and indoor floors of warehouses, parking & car service garages
- ▶ Outdoor laundries, gas stations, ramps, etc.

Properties - Advantages

- ▶ Minimum downtime: complete application within 8 hours (primer & two coats)
- ▶ Quick turnaround: fully exploitable within 24 hours
- ▶ Incomparable coverage: Just one coat after priming is sufficient in cases with smooth substrates
- ▶ Also applicable when low temperatures prevail (down to +5°C)
- ▶ Unaffected by sunlight and adverse weather conditions
- ▶ Excellent resistance to abrasion and mechanical stress
- ▶ High chemical resistance (to dilute acids-alkalis, car oils, petroleum, etc.)



TECHNICAL CHARACTERISTICS - CURING DETAILS

Mixing ratio A:B (by weight)	60:40
Gloss (60°)	92
Abrasion resistance (Taber Test, CS 10/1000/1000, ASTM D4060)	62mg
Adhesion strength (EN 13892-8)	≥3N/mm ²
Flexibility (ASTM D522, 180° bend, 1/8" mandrel)	Pass
Skid resistance (EN 13036-4, wet surface, with 2,5% w/w addition of Neotex® Antiskid M)	24 (PTV scale)
Dry to recoat - Walkability (+25°C)	2 hours
Full cure - Heavy traffic (+25°C)	24 hours
Consumption	200gr/m² per layer

Appearance (cured)

Glossy

Colours

RAL 9003	RAL 1013	RAL 7035
RAL 3009	RAL 7038	RAL 1018

Tailor-made shades can be produced for a minimum quantity, upon special arrangement

Packing

Sets (A+B) of 5kg



Colours:

RAL 7035, RAL 7038

Also available in other shades upon request.

Packing:

Sets (A+B) 4,5kg

Neodur® Fast Track SF



Brushable, fast-curing, solvent-free aliphatic polyurea system for interior & exterior flooring applications

Properties - Advantages

- ▶ Suitable for areas where solvent fumes are not wanted
- ▶ Minimum application time & fully exploitable within 24 hours
- ▶ Applicable in one layer on smooth surfaces

TECHNICAL CHARACTERISTICS - CURING DETAILS

Abrasion resistance (Taber Test, CS 10/1000/1000, ASTM D4060)	75mg
Adhesion strength (EN 13892-8)	≥3N/mm ²
Dry to recoat - Walkability (+25°C)	3 hours
Full cure - Heavy traffic (+25°C)	24 hours
Consumption	300gr/m² per layer (applied by roller), 600gr/m² in one layer (applied by squeegee or smooth trowel)



Colours:

RAL 9003, RAL 7035, RAL 7038, RAL 3009

Also available in other shades upon request.

Packing:

Sets (A+B) 5,5kg

Neodur® FT Elastic



Brushable, fast-curing, elastic polyaspartic polyurea coating for waterproofing & flooring applications

Fields of Application

Roof parking decks, balconies, terraces with high traffic and tiled surfaces, or as a topcoat over aromatic waterproofing systems

Properties - Advantages

- ▶ Combines mechanical durability with outstanding waterproofing properties
- ▶ Unaffected by UV radiation & resistant to early rainfall

TECHNICAL CHARACTERISTICS - CURING DETAILS

Elongation at break (ASTM D412)	170%
Tensile strength at break (ASTM D412)	14MPa
Abrasion resistance (Taber Test, CS 10/1000/1000, ASTM D4060)	75mg
Dry to recoat - Walkability (+25°C)	4 hours
Consumption	300gr/m² per layer



Colours: Transparent

Packing: Sets (A+B) of 20kg, 8kg and 2kg

Neodur® FT Clear



Transparent, fast-drying, brushable elastic aliphatic polyurea waterproofing system for roofs and balconies, which are covered with tiles

Properties - Advantages

- ▶ Provides a blister-free final surface with zero water absorption
- ▶ Highly resistant to UV radiation & yellowing
- ▶ Excellent resistance to abrasion and mechanical stress
- ▶ Retains and enhances the aesthetic result of the tiles

TECHNICAL CHARACTERISTICS - CURING DETAILS

Elongation at break (ASTM D412)	200%
Tensile strength at break (ASTM D412)	22MPa
Abrasion resistance (Taber Test, CS 10/1000/1000, ASTM D4060)	80mg
Dry to recoat (+25°C)	5 hours
Consumption	700gr/m² in two layers



ATHENS: V. Moira str., P.O. Box 2315, GR 19600 Industrial Area Mandra, Athens, Greece ☎ +30 210 5557579 📠 +30 210 5558482
THESSALONIKI: Ionias Str., GR 57009 Kalochori, Thessaloniki, Greece ☎ +30 2310 467275 📠 +30 2310 463442
www.neotex.gr • e-mail: export@neotex.gr